

Installation Guide - High Density Acoustic Panels

What's in the box?

- x 2 Acoustic Panels
- x 1 Attached Sawtooth Hook (per panel)



What do I require?

You can choose between screws or nails (Brick walls):

Masonry Screws:

- Tape Measure
- Pencil
- Hammer
- 5mm Masonry Drill Bit
- Masonry Drill
- 5mm Masonry Screws x2 (35mm - 50mm Length)

Nails:

- Tape Measure
- Pencil
- Hammer
- Hardened Nails x2
- Pliers

Step 1: Placement

Determine where you will hang your acoustic panels:

- Central wall locations and reflection points should be your primary focus.
- If you have a limited number of acoustic panels, we suggest spreading them out in the room. This will assist with overall absorption.
- The panel should be aligned with your ear height. This is dependent on your sitting or standing position.

Step 2: Calculate Even Spacing(example) Sawtooth Hook

We recommend sketching the layout on paper first.

(A): Length of wall

(C1), (C2): The width of Panel 1 and 2.

(B1), (B2): Sawtooth location on Panel 1 and 2.

(D1), (D3), (D3): Even spacing between the panels.

Formula for Panel 1(Example):

$$\{[A - (C1 + C2)] \div (\text{Number of spaces between panels})\} + (B1)$$

$$= [(2700\text{mm} - 1200\text{mm}) \div 3] + 300\text{mm}$$

$$= (1500\text{mm} \div 3) + 300\text{mm}$$

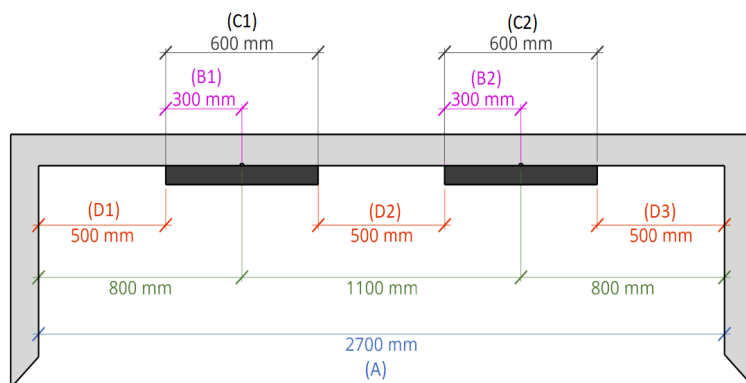
$$= 800\text{mm}$$
 (Measure and mark 800mm from left wall for 1st location).

Formula for Panel 2: (and subsequent panels)

Answer from "Formula for Panel 1" + 300mm

800mm + 300mm

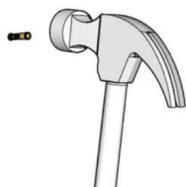
$$= 1100\text{mm}$$
 (Measure 1100mm from your 1st mark to the right and mark your 2nd location).



Step 3: Drill/Nail Wall Locations

Masonry Screws:

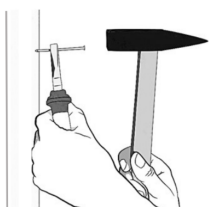
- Using a masonry drill, drill on the allocated pencil mark with a 5mm masonry drill bit.
- Use a hammer to knock the wall plug in.
- After the wall plug is in, hammer the screw into the wall plug; ensure you keep about 5mm of the screw exposed.



OR

Hardened Nails:

- Hold your hardened nail with pliers on the allocated pencil mark.
- Hammer the hardened nail in with firm yet controlled hits.



Step 3: Hang Acoustic Panels

- Hold the panel with both hands on either side.
- Ensure that the sawtooth hook on the back of the panel aligns with the screw/nail.
- Lift the panel above the screw/nail and lower it down onto the screw/nail.

